

MONTHLY MEMBERSHIP PROGRESS REPORT

District 321C2

Results as of: 5/31/2020

GMT:

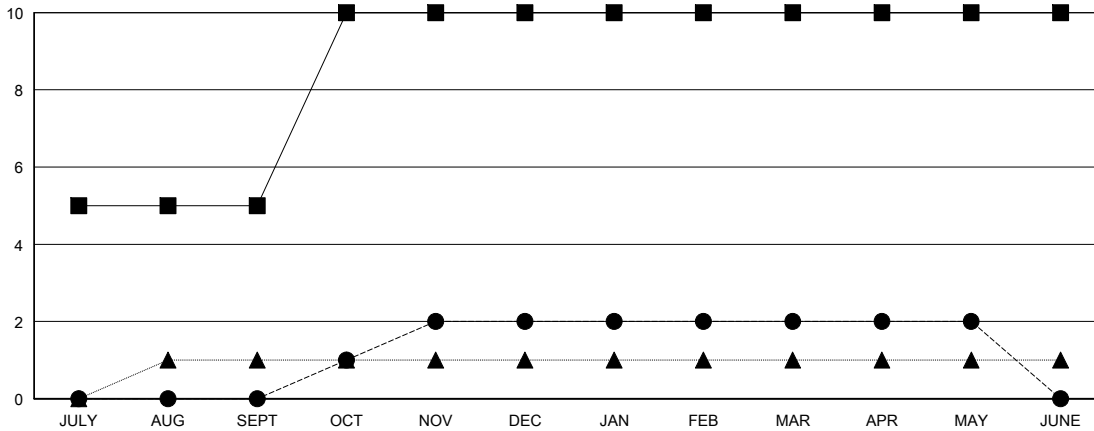
LOCATION INDIA

GMT CA

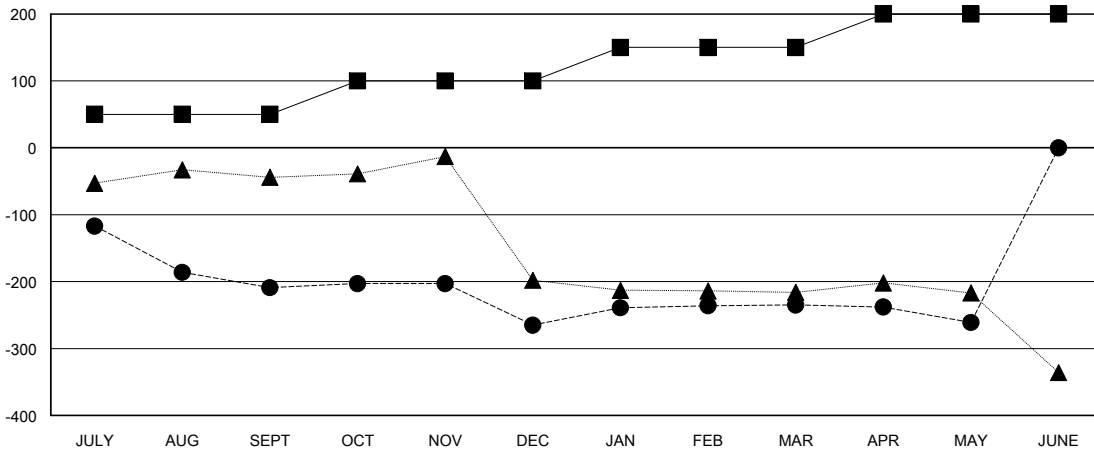
Clubs			
RESULTS FOR 2019-2020			
QUARTER	NEW CLUB GOAL	NEW CLUBS	DROPPED CLUBS
JULY/AUG/SEPT	5	0	1
OCT/NOV/DEC	5	2	1
JAN/FEB/MAR	0	0	0
APR/MAY/JUNE	0	0	0

Members			
RESULTS FOR 2019-2020			
QUARTER	MEMBER GROWTH NET GOAL	MEMBER GROWTH ACTUAL	DROPPED MEMBERS ACTUAL (including transfers)
JULY/AUG/SEPT	50	53	243
OCT/NOV/DEC	50	54	105
JAN/FEB/MAR	50	80	39
APR/MAY/JUNE	50	5	31

GOALS AND ACTUAL NEW CLUBS CUMULATIVE



GOALS AND ACTUAL MEMBERS CUMULATIVE



DROPPED CLUBS: 2	28 CLUBS OF 80 ADDED 1 OR MORE NEW MEMBERS	GENDER DISTRIBUTION
		MALE 2,093 (64.90%)
		FEMALE 1,132 (35.10%)
DROPPED MEMBERS	CLICK HERE FOR CUMULATIVE MEMBERSHIP DATA	TOTAL FAMILY UNIT MEMBERS 2,049
DECEASED 7		FAMILY MEMBERS PAYING HALF DUES 1,283
CLUB CANCELLED 72		
OTHER 339		
TOTAL 418		